

5143-000

LEGEND:

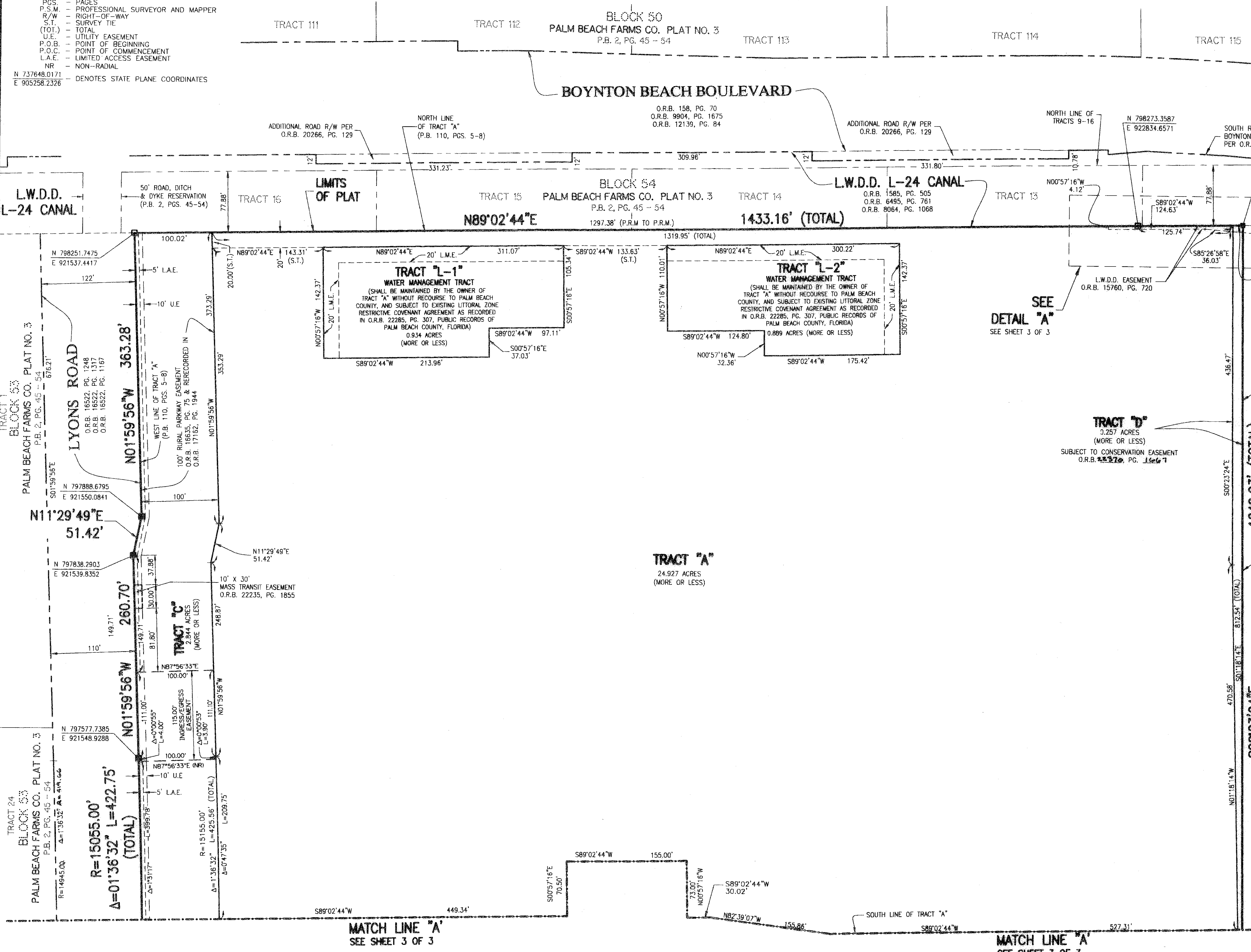
- - FOUND PERMANENT REFERENCE MONUMENT L.B. #6674
- - SET PERMANENT REFERENCE MONUMENT, L.B. #7062
- - SET PERMANENT CONTROL POINT, L.B. #7062
- D.B. - DEED BOOK
- L.W.D.D. - LAKE WORTH DRAINAGE DISTRICT
- N.T.S. - NOT TO SCALE
- O.R.B. - OFFICIAL RECORD BOOK
- R.D.&D. - ROAD, DYKE AND DITCH RESERVATION
- ESMT - EASEMENT
- P.B. - PLAT BOOK
- PCS - PAGES
- P.S.M. - PROFESSIONAL SURVEYOR AND MAPPER
- R/W - RIGHT-OF-WAY
- ST - SURVEY TIE
- (TOT.) - TOTAL
- U.E. - UTILITY EASEMENT
- P.O.B. - POINT OF BEGINNING
- P.O.C. - POINT OF COMMENCEMENT
- L.A.E. - LIMITED ACCESS EASEMENT
- NR - NON-RADIAL
- N 737648.0171
E 905258.2326 - DENOTES STATE PLANE COORDINATES

CANYON TOWN CENTER TMD

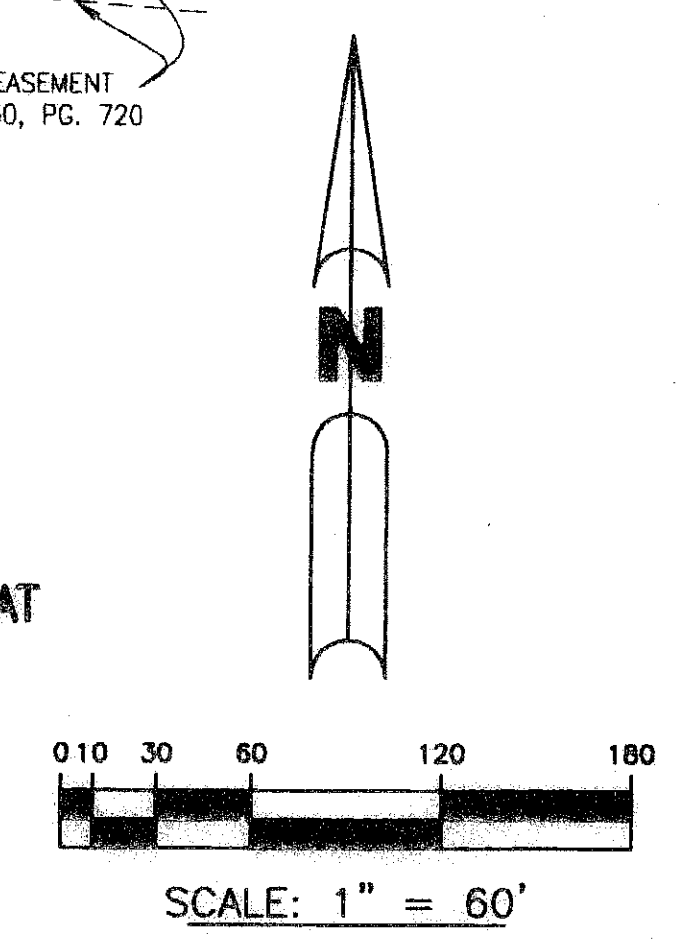
BEING A REPLAT OF TRACT "A", ACCORDING TO THE PLAT OF BOYNTON - LYONS,
AS RECORDED IN PLAT BOOK 110, PAGES 5 THROUGH 8, PUBLIC RECORDS, PALM BEACH COUNTY, FLORIDA
ALL LYING WITHIN SECTIONS 29 AND 30, TOWNSHIP 45 SOUTH, RANGE 42 EAST,
PALM BEACH COUNTY, FLORIDA
SHEET 2 OF 3 DECEMBER, 2007

THIS INSTRUMENT PREPARED BY
PERRY C. WHITE, P.S.M. LS-4213 STATE OF FLORIDA
ARCADIS U.S. INC., LB 7062
ENGINEERS PLANNERS SURVEYORS
2081 VISTA PARKWAY
WEST PALM BEACH, FLORIDA 33411

18



SEE
DETAIL "A"
SEE SHEET 3 OF 3



NOTE:
COORDINATES SHOWN ARE GRID COORDINATES
DATUM = NAD 83, 1990 ADJUSTMENT AS READJUSTED
BY PALM BEACH COUNTY IN 1998
ZONE = FLORIDA EAST ZONE
LINEAR UNIT = U.S. SURVEY FEET
COORDINATE SYSTEM = 1983 STATE PLANE
TRANSVERSE MERCATOR PROJECTION
ALL DISTANCES ARE GROUND
SCALE FACTOR = 1.0000227
PLAT BEARING = GRID BEARING
NO ROTATION

